

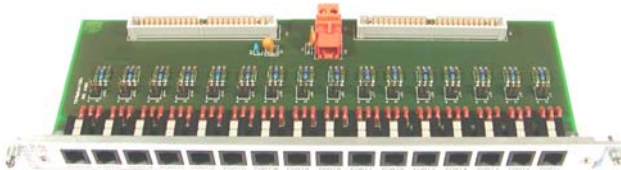
TIP866-TM-30 Transition Module (16 X RJH) for TIP866/867

Application Information

The TIP866-TM-30 is a high density transition module for the serial interfaces TIP866 and TIP867.

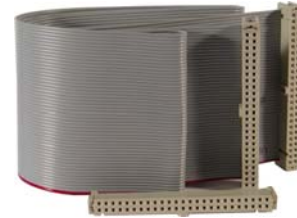
The TIP866-TM-30x supports the TIP866-10x/11x (RS232, and TTL-Level interfaces), the TIP867 (RS485 interface) and the according versions of the IP-Octal. Up to two modules can be connected to one transition module TIP866-TM-30x.

Sixteen 4-pin RJH connectors are mounted in a 6U 4TE EMV front panel.



The transition module supports TXD, RXD, GND for each set of the eight channels of the TIP866-10x/11x (RS232 / TTL-Level) and Dx+/-, GND for the TIP867-10x (RS485).

On board termination is provided for RS485. Termination can be activated by jumper. A two pin screw terminal (X9) can be used to supply the on board termination for RS485.



TA106: ribbon cable with 50 pin ribbon cable connectors

Technical Information

- 6U / 4TE EMV front panel
- Sixteen 4pin RJH connectors mounted in front panel
- Supports TIP866-10x/11x, TIP867 and IP Octal
- RS485 termination selectable by jumper
- +5V / GND by 2 pin terminal block; Power only required to supply on board termination
- Fuse protected by a 1A multi-fuse
- Two TA106, 0.8m ribbon cables with 50 pin ribbon cable connectors, are included

Order Information

- | | |
|-------------------------|---|
| TIP866-TM-30R | Transition Module for TIP866/867; 6U / 4TE with sixteen 4 pin RJH connectors and two TA106 cables |
| TIP866-TM-30 | None RoHS compliant version of TIP866-TM-30R |
| TIP866-TM-30-DOC | User Manual |